

indoor  
**outdoor**

displays

telescopicflag  
sharkfinflag  
popupaframe  
aluminiumaframe  
minigazebo  
standardgazebo  
deluxgazebo  
compactgazebo  
backpackbanner  
xbanneroutdoor



**product**catalogue

# Telescopic Flag

## Available Sizes

3m (h) x 720mm (w) &  
4m (h) x 720mm (w)

## Graphic panel

360 x 720 dpi uv and weather  
resistant polyester fabric

## Weight

2.5 kg

Design templates available on  
request



**Pedigree**

**We're for dogs.®**



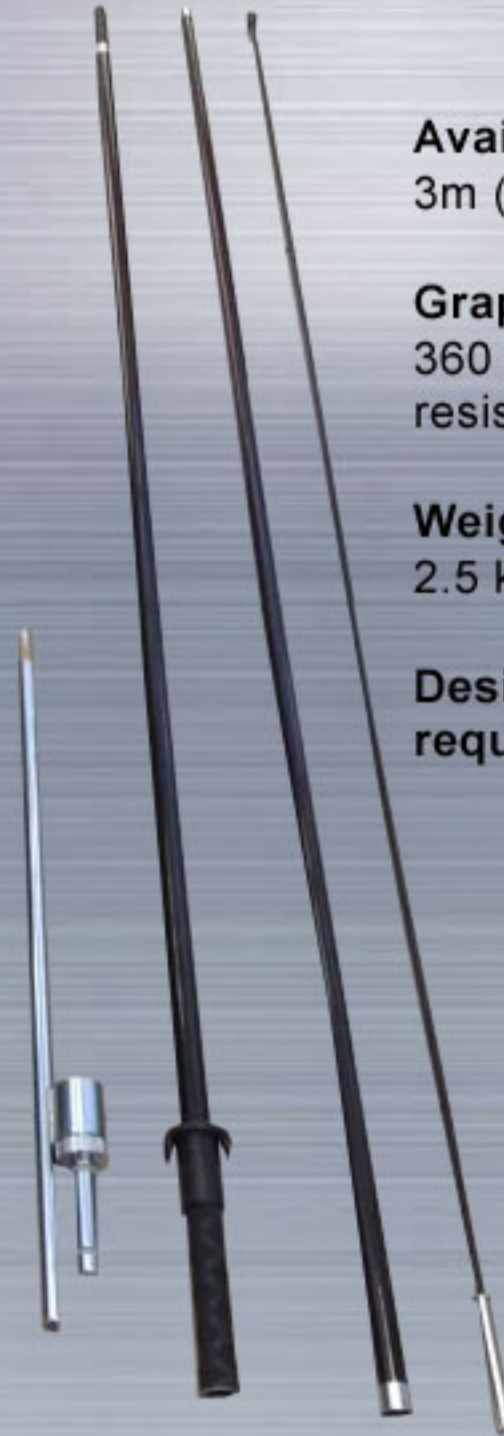
## description

Telescopic displays are tried and tested outdoor branding displays that combine function with attractive design and cost-efficiency. Our Deluxe Telescopic displays are available in three heights namely 3m(h), and 4m(h). If you want to use your Telescopic indoors there are two options namely a Steel collapsible base cross base and if more weight is needed for stability an optional Water filled bag can be slid over the steel indoor base. Our Deluxe Telescopic displays are constructed of durable lightweight Carbon Fibre Rods in sections and are supplied with a Deluxe Ground Spike with Bearing and durable padded nylon carry bag. A stylish cluster base can also be used where by 3 or more Telescopic displays can be slotted into to form a Flag Fountain. Two Print options are available namely, Full colour dye-sublimated digital or Spot colour Screen printed for larger bulk orders.



**Optional Extras**

# Sharkfin Flag



## Available Sizes

3m (h) & 4m (h)

## Graphic panel

360 x 720 dpi uv and weather resistant polyester fabric

## Weight

2.5 kg

Design templates available on request

## dp description

Sharkfins are tried and tested outdoor branding displays that combine function with attractive design and cost-efficiency. Our Deluxe Sharkfins are available in three heights namely 2m (h), 3m (h), and 4m (h). If you want to use your Sharkfin indoors there are two options namely a Steel collapsible base cross base and if more weight is needed for stability an optional Water filled bag can be slid over the steel indoor base. Our Deluxe Sharkfins are constructed of durable lightweight Carbon Fibre Rods in sections and are supplied with a Deluxe Ground Spike with Bearing and durable padded nylon carry bag. A stylish cluster base can also be used where by 3 or more Sharkfins can be slotted into to form a Flag Fountain. Two Print options are available namely, Full colour dye-sublimated digital or Spot colour Screen printed for larger bulk orders.



Optional Extras

# popup a-frame



## Available Sizes

2000mm (w) x 1000mm (h)

## Also available in a wider size:

2.6m (w) x 1m (h)

## Graphic panel

360 x 720 dpi dye sublimated fabric

## Weight

5 kg



## description

The POP UP A – FRAME is a convenient and powerful indoor or outdoor double-sided branding tool that sets up in seconds. The unit consists of a spring steel collapsible frame with two attached graphic panels which simply fold open once the unit is erected. The unit is supplied with four ground pegs and a compact nylon carry bag for easy storage.

# aluminium a-frame



## Visual and print sizes

Landscape:

2000mm (w) x 1000mm (h) [x2]

3000mm (w) x 1000mm (h) [x2]

Portrait:

1000mm (w) x 2000mm (h) [x3]

1000mm (w) x 3000mm (h) [x3]



## dp description

The ALUMINIUM A – FRAME is a trusted double or triple sided indoor or outdoor branding tool which consists of a lightweight collapsible aluminium frame and two or three full colour interchangeable weather resistant pvc graphic panels. The unit is supplied with four ground pegs and a carry bag.

# Mini Gazebo



**Size**  
1.5m (w) x 1.5m (w)

**Graphic panel**  
360 x 720 dpi uv and  
weather resistant Subli-  
mated Canvas

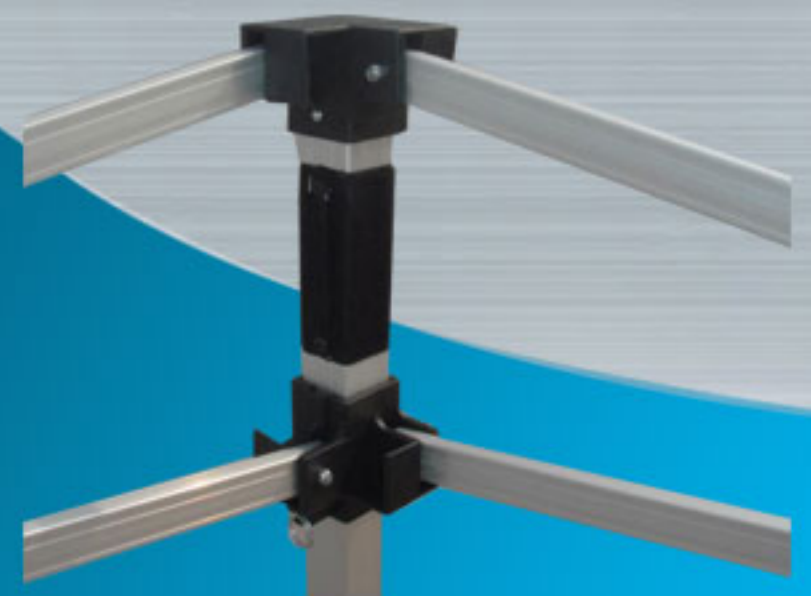
**Weight**  
12 kg



## description

Create high visibility in any outdoor location with this Super Affordable & Compact Aluminium Pop Up Gazebo. The ultra compact Mini Gazebo consists of an aluminium "Pop Up" collapsible rust proof frame with attached full colour branded roof top and overhangs, optional branded side and back walls are also available. All our Mini Gazebo's are shipped with a nylon carry bag, Ground Pegs and tie downs. The Mini Gazebo is the perfect solution for street vendors or large outdoor campaigns where space and budget is limited.

# Standard Gazebo



**Size**  
Size: 3m (w) x 3m (w)

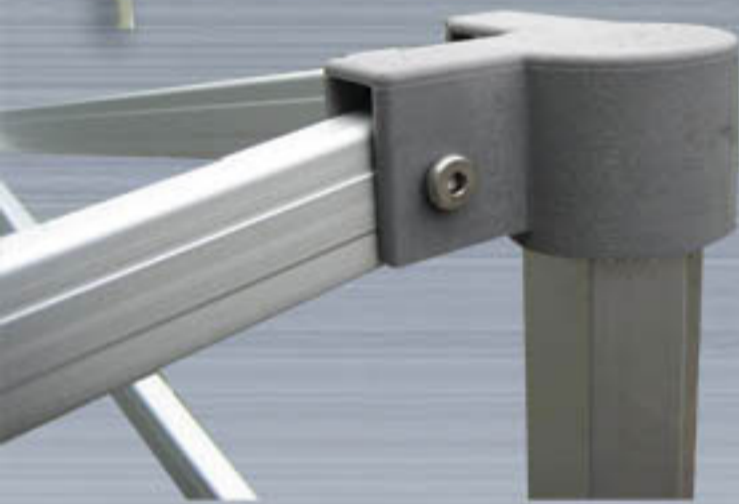
**Graphic panel**  
360 x 720 dpi uv and weather resistant Sublimated Canvas

**Weight**  
15 kg

## dp description

Create high visibility in any outdoor location with this Super Affordable Aluminium Pop Up Gazebo. The Standard Gazebo consists of a aluminium "Pop Up" collapsible rust proof frame with attached full colour branded roof top and overhangs, optional branded side and back walls are also available. All our Deluxe Gazebo's are shipped with a nylon carry bag, Ground Pegs and tie downs.

# Deluxe Gazebo



**Size**  
2900mm (w) x 2900mm (w)

**Graphic panel**  
360 x 720 dpi uv and  
weather resistant  
Sublimated Canvas

**Weight**  
20 kg



## dp description

Create high visibility in any outdoor location with this Super Heavy Duty Deluxe Portable Gazebo. Our Deluxe Gazebo is currently the strongest in its class and undoubtedly the best looking as well. It consists of a "Pop Up" collapsible Super Heavy Duty rust proof Aluminium frame with attached Branded roof top and overhangs. We are able to Brand the entire roof of our Gazebo and if need be Brand optional side and back walls as well. All our Deluxe Gazebo's are shipped with a handy Flight Case with wheels making for easy transportation. The Deluxe Gazebo is also supplied with Guy Ropes, Ground Pegs and a Rubber Mallet.

# Backpack Banner



## Visual Sizes

X banner: 680mm (w) x 1.2m (h)

Sharkfin: +-300mm (w) x 1.2m (h)

## Graphic panel

X banner: 720 dpi full colour digital Ferrari [non curl] pvc graphic panel

Sharkfin: 720 dpi full colour dye-sublimated fabric graphic panel

## Weight

3 kg

## dp description

Stand out from the crowd and really capture the attention of your audience as you or they pass by! The BACKPACK BRANDERS are a highly effective way to mobilize your brand or promotion where it counts. This wearable branding pack is lightweight and comfortable, easy to assemble and the full colour graphic panels can be changed on site in seconds. There are two shapes to choose from namely: X BANNER or SHARKFIN, both are unique in their own right and at the end of the day it's a personal decision which shape works best for your brand. Sharkfin BackPacks are available in double sided as an option.



# X Banner outdoor

## Print Specs

### Width

From 600mm (w) up to 800mm (w)

### Height

From 1.5m (h) up to 2m (h)

### Weight

10KG [empty]

30KG [filled]



## dp description

Do you like the shape and versatility of our regular X BANNER but wished you could use it outdoors, well now you can, with our new **X BANNER OUTDOOR**. The unit comprises of an attractive water or sand filled plastic moulded base with telescopic pole and top and bottom tension rods. Not only can you use this as a single or double sided display but you can also change your print width and height to suite your requirements. Prints are easily interchangeable on site and requires no tools of any sort. The X BANNER OUTDOOR comes packaged in a durable nylon carry bag With all attachments and a full colour high resolution digital fabric or pvc print. Available in single or double sided.